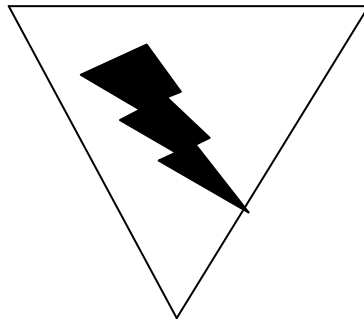


# ***ELECTRONIC DISPLAYS INC.***

135 S. CHURCH STREET  
ADDISON, ILL. 60101  
[www.electronicdisplays.com](http://www.electronicdisplays.com)



## ***Installation:***



## **WARNING – SHOCK HAZARD**

Always completely disconnect power from the display before opening the unit. Do not reapply power to the display until the unit has been securely closed.

### **General:**

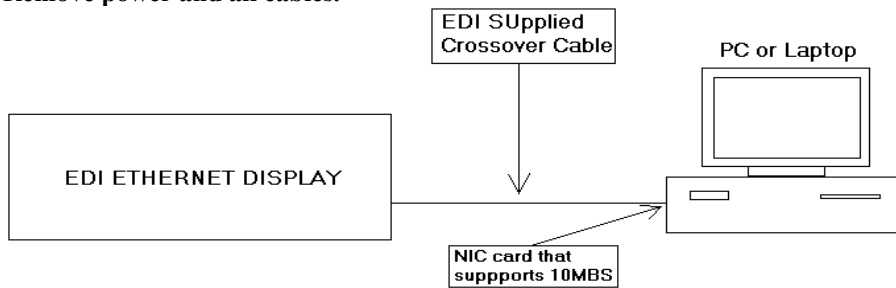
- The device itself uses Telnet Port number 23. Either the EDI Message Pro software, the EDI Scoreboard Pro software, or the EDI Tri-color software will communicate to this device. If you prefer to write your own software, you must connect to the IP address. Once connected to the IP address open port 23 and send the data supplied in the protocol document. (See Appendix E for protocol information).
- There is an IP utility that is used to change the IP address, the gateway, and the Subnet Mask. This utility searches for all EDI Ethernet Devices that are on the network.
- A Crossover cable is supplied with the display for connecting to the Network card in the PC directly to the Ethernet card in the display. See Setup for configuring the IP Address, Gateway, and Subnet Mask.

### **I: Initial Setup:**

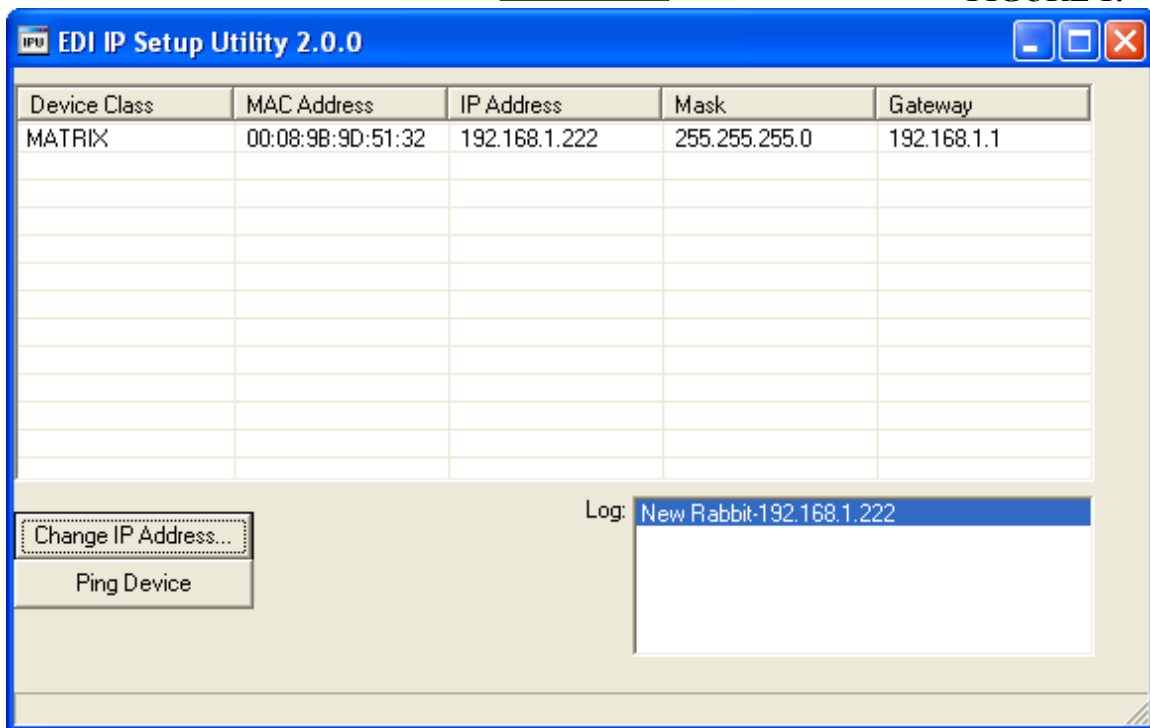
**NOTE: DURING THIS PROCEDURE, DO NOT POWER UP UNIT UNTIL INSTRUCTED TO DO SO!**

1. Place unit on table near a PC or Laptop used only for initial configuration.  
**NOTE:** PC must have a 10 base T or 10/100 base T network card installed and must be configured for Auto Detect or 10 Megabits only. (Please refer to your Network Card Manual if you need to change this.) This PC should be running Windows 98/ME/2000, /XP/NT 4.0.
2. Attach one end of the supplied crossover cable the Ethernet device.
3. Connect the other end to the network in the PC (See Diagram in Figure 1).
4. Power up the unit with 110 VAC.
5. Insert the CD into your floppy drive. Navigate to the CD drive and you will find IPUTIL.EXE. Double click on the IPUTIL.EXE
6. Run IPUTIL and you should see all the network settings that were set to the EDI Ethernet device.
7. Highlight the Device you would like to change and Click Change IP Address...(See Figure 2)

8. This screen allows you to enter the Subnet Mask, the IP address, and the Gateway. (These settings will have to be obtained from your IT department). **NOTE: THE SAME IP ADDRESS CANNOT EXIST MORE THAN ONCE ON THE SAME NETWORK!**
9. Enter the settings and click OK. The Ethernet device will reset in 5 seconds.
10. Remove power and all cables.



**FIGURE 1:**



**FIGURE 2**

## II. Final Configuration:

1. Connect one end of a CAT5E cable to our display's RJ-45, Ethernet connection.
2. Run the other end to a Hub on your network. Plug the RJ-45 into the hub that supports 10MBPS.  
NOTE: The wire positions on this end must be the same as the other end to create a "Pass Through" cable.
3. The unit is now ready to be mounted.
4. Mount to a structure using one of the following methods:
  - Wall mount
  - Hang mount

This Ethernet device is equipped with RS485 serial output to the display.

## Other Important Notes:

These Ethernet adapters were tested on a Windows N.T. 4.0 server network. The actual workstations operating systems these devices would communicate to were as follows:

- Windows 98/NT/2000/ME/XP

**All other operating systems have not been tested.**

***Disclaimer.***

**Although our Ethernet units will support gateways, we cannot provide technical support due to the amount and variety of network configurations when using gateways. Please contact your IT department for technical support when using gateways.**